

Your Source for Specialty Products

Serving the Historical Metalsmith and Discriminating Artisan

**This catalog lists odd, unusual and special products
Hot dipped Tin plate, Rivets, Chemicals, tools, books and Electroplate
Gathered together under one catalog,
Serving the International community
If there is something you desire
Please let us know.**

**BARNHART STUDIOS
Rolene and Paul Barnhart
804 Rosemarie
Lake in the Hills, IL 60156**

Fall 2011

847-854-5957 224-622-5958

paul@barnhart-studios.com

rolene@barnhart-studios.com

Money orders and personal checks by mail.





Hello Fellow Historical Metal Smiths,

At the encouragement of a few friends, Here is a collection of specialty products that may be useful for anyone in the metal smithing business. This is your catalog if you don't see what you use-- let me know. We can most likely find a vendor and add the product line. Call us for a Quote. We have attempted to collect those items that are hard to find --- or where some vendors would have costly minimum orders.

We are always adding new products, this year Rosin flour, electroplate and cookie cutter coils. We are always looking for new products to support the craftsmen, if you know of a great item please let us know. We represent an engraver who is a first class engraving shop to make your touchmarks. American Beauty for electric soldering irons, parts and service, and Johnson Manufacturing for world Class solders, fluxes and also Bessey Hand Tools - you know their great clamps - we specialize in their shears and snips.

How this works, send me an email of your selection and I will provide a Quote. Then via email we verify you have what you need at the latest prices and availability.

So much of what we do is so labor intensive, it seems a shame to start with less than premium materials/tools.

Although not related to us in any way, I invite you to join and participate in www.tintinkers.org. Tips and techniques, chat and the Annual Convergence are all part of this great resource.

Enjoy and work safe.

Call us for a Quote.

Rolene and Paul Barnhart

224-622-5958

paul@barnhart-studios.com

Returns: This costs everyone money. We stand behind our products if they are defective but we really don't have an approval process for you to check out a tool, and then return it.

No returns are authorized without our written approval. You agree not to cancel payments for any reason or take charge backs. By purchasing from us you agree to allow us to resolve any and all disputes directly.

Shipping: Most items are shipped UPS or USPS. The carrier is responsible for damages and you need to work with them on a claim. I will help where I can. All prices are FOB Lake in the Hills, IL, or warehouse.

Delivery: If something is wrong, don't accept the package, photograph the damage, report to the carrier as soon as you can. Write everything down.

Refunds: Often at vendors I do not get a refund --but credit for like kind, that is what I can provide you. Custom cuts and the like are not returnable.

Warranty: There are no warranties that I can provide, only the manufacturer warranty that may come with the product.

Liability: We will only be liable for the cost of goods sold, MSDS sheets are available. If you do not know how to use a product. Don't use it. Check online for proper application.

Your storage of products, use of products, and sale of products are beyond our control. We encourage you to use the products wisely and in accordance with local and federal regulations.

Pricing: Most of the products contained in this catalog are priced the best I can do for you. There are no price guarantees, and most prices will fluctuate without any advance notice.

If you choose to pay via Paypal we reserve the right to recover the fees charged to us for the service.

We reserve the right to reprice anything that is in the catalog for any reason.

HAZMAT shipping can really raise the cost of product delivery to you. There are a lot of products that require HAZMAT shipping. We don't determine if something is hazardous. Often we can make arrangements to deliver through another agent. Are you coming to the Chicago area soon?

All prices are budgetary. An up-to-date quote is needed for every order.

Don't see what you need, Call Paul Barnhart 224-622-5958

Not responsible for carrier damages

Discounts available on greater quantities.

paul@barnhart-studios.com

Flux for Soldering

flux liquid	JOHNSON'S SOLDERING FLUID - ORIGINAL GENERAL PURPOSE FLUX		Bench Bottle, 3.5 Oz	3.45
"	"	01-07	Pint	5.10
"	"	01-09	Quart	7.88
"	"	01-11	Gallon	21.53

Flux for Torch Work on Stainless

flux liquid	JOHNSON'S NO. 1 STAINLESS STEEL FLUX - FOR TORCH (HAZ)		Quart	13.35
"	"	02-08	Gallon	32.63

Flux for Iron Work on Stainless

flux liquid	LLOYD'S STAINLESS STEEL FLUX - FOR IRONS (HAZ)		Quart	9.15
"	"	03-08	Gallon	27.53

Flux solder Paste

FLUX PETROLEUM	JOHNSON'S SOLDERING PASTE - ORIGINAL GREASE TYPE		8 oz jar	2.25
"	"	05-09	1 Lb Jar	6.60

Flux solder Paste water soluble

FLUX H2O	JOHNSON'S BEST WATER SOLUBLE PASTE, (MEETS ASTM B-813)	05-89	1 Lb Jar	6.53
----------	---	-------	----------	------

Flux Silver Solder (brazing)

FLUX BRAZING SILVER	LLOYD'S NO. 7 SILVER BRAZING FLUX - WHITE PASTE	07-05	12 Oz Squirt Bottle	5.48
---------------------	--	-------	---------------------	------

Flux Tinning Paste This is the greatest stuff !! unbelievable...!!

TINNING FLUX H2O	E-127 FLUX-'N-SOLDER With PURE TIN - SMOOTH GRAY PASTE	16-02	1 Lb Jar	31.65
"	"	16-04	4 Lb Jar	113.63

Flux Tinning Powder

FLUX	JOHNSON'S VERSATIN POWDER - POWDERED TINNING COMPOUND	20-72	1 Lb Jar	11.63
------	--	-------	----------	-------

Flux Sal-Ammoniac

FLUX	JOHNSON'S SAL-AMMONIAC TINNING BLOCKS	24-100-05	1 Lb Block	8.00
"	JOHNSON'S VERSACLEAN POWDER - POWDERED SAL-AMMONIAC	24-100-07	1 Lb Jar	8.00

Bill McMillan's video on Tinsmithing.

DVD	Bill uses the 18 th century techniques for making tin projects			\$25.00
-----	--	--	--	---------

A few frames from the DVD



All prices are budgetary. An up-to-date quote is needed for every order.
 Don't see what you need, Call Paul Barnhart 224-622-5958 Email paul@barnhart-studios.com
 Not responsible for carrier damages
 Discounts available on greater quantities.

Flux Rosin Paste

FLUX	JOHNSON'S P-301 ROSIN PASTE FLUX - SOFT, NON-CORROSIVE	26-301-04	4 Oz Jar	6.83
------	--	-----------	----------	------

Flux Rosin Lump "Clear"

ROSIN LUMP	JOHNSON'S WATER WHITE GUM ROSIN - flour		1/4 LB BAG	8.00
ROSIN LUMP	JOHNSON'S WATER WHITE GUM ROSIN - lump	27-24	5 Lb can	28.88
ROSIN LIQUID KIT	JOHNSON'S WATER WHITE in a small jar—you add the alcohol to dissolve the Rosin.			6.00

Johnson Gas Furnaces (Johnson Appliances Iowa)

PARTS PARTS PARTS CALL WITH MODEL NUMBER FOR ALMOST ANY PART YOU NEED

Soldering Coppers Forged Pair

COPPERS	JOHNSON'S FORGED SOLDERING COPPERS, SOLD IN PAIRS		1 Lb/Pair Pointed	46.8
"	"		2 Lb/Pair Pointed	65.1
"	"		3 Lb/Pair Pointed	80.93
"	"		4 Lb/Pair Pointed	101.93
"	"		5 Lb/Pair Pointed	112.65
"	"		6 Lb/Pair Pointed	131.63
"	"		2 Lb/Pair Chisel	65.1
"	"		3 Lb/Pair Chisel	80.93
"	"		4 Lb/Pair Chisel	101.93
"	"		4 Lb/Pair Hatchet	101.93
"	"		6 Lb/Pair Hatchet	131.63
Wood Handle	Wood Handle for 1 Lb Size			2.18
"	Wood Handle for 2, 3 and 4 Lb Sizes			2.18
"	Wood Handle for 5, 6 and 8 Lb Sizes			2.18

Acid Brushes, Heat and Acid Resistant.

BRUSH	FIBERGLASS ACID BRUSHES - RENEWABLE, EACH		Tin Handle 3/8" X 6"	1.65
"	"		Large Tin Handle 1/2" X 6"	1.95
"	"		Copper Handle 5/8" X 6"	3.23
"	"		Long Copper Handle 5/4"	4.05
"	"		Large Copper Handle 7/4"	4.65
"	"		Long Large Copper Handle	5.33

Solders and Fuseable alloys Prices change almost every day. Use the listed Prices as a guide.

	Alloy	Description	1/8 wire to 10 lb min
TIN	99.95% PURE TIN	99.95+ PURE TIN WIRE, bars or ingot	
#460	Sn/ 3.5Ag	FOOD GRADE TIN/SILVER BINARY EUTECTIC SOLDER - 430 F	
#495	Sn/Cu/.5Ag	TIN/COPPER/SILVER BEARING SOLDER - MELTS 437 - 660 F	call for pricing
#497	Sn/Sb/Cu/Ag SuperFlo™	JOHNSON'S LEAD-FREE SUPERFLO SOLDER - MELTS 419 - 452 F	call for pricing

Discounts available on greater quantities. Please allow us to quote your next purchase.

Ag=Silver, Al=Aluminum, Bi=Bismuth, Cu=Copper, In=Indium, Ni=Nickel, P=Phosphorus, Pb=Lead,
 Sb=Antimony, Si=Silicon, Sn=Tin, Zn=Zinc
 (p) Patented or Proprietary Alloy, (e) Eutectic Alloy, (FC) Flux-Cored

*All prices are budgetary. An up-to-date quote is needed for every order.
 Don't see what you need, Call Paul Barnhart 224-622-5958
 Not responsible for carrier damages
 Discounts available on greater quantities.
paul@barnhart-studios.com*

Lanthorn Windows (MICA)

Mica	.004"	3" x 5"	0° to +800° F	CLEAR.		@	8.25
"	"	4" x 5"	"	"		@	10.88
"	"	5" x 8"	"	"		@	12.75
"	"	6" x 8"	"	"		@	39.00



Large Head Steel Rivet

rivet	Steel Flat H	1/4"	3/16" Dia.	Head Ht.: 0.069"	Head Dia.: 0.442"	truss head	250	8.72
"	"	3/8"	"	"	"	"	200	8.72
"	"	1/2"	"	"	"	"	150	8.72
"	"	3/4"	"	"	"	"	125	8.72
"	"	1"	"	"	"	"	100	8.72
"	"	3/8"	1/4" Dia.	Head Ht.: 0.091"	Head Dia.: 0.590"	"	100	8.72
"	"	1/2"	"	"	"	"	75	8.72
"	"	3/4"	"	"	"	"	60	8.72
"	"	1"	"	"	"	"	50	8.72
"	"	1 1/4"	"	"	"	"	40	8.72
"	"	1 1/2"	"	"	"	"	40	8.72



Tinners Rivets

rivet	Steel Tinne	5/32"	0.088 DIA "	head dia 0.215"	head height 0.030"	8 OZ	500	4.18
"	"	3/16"	0.104 DIA "	head dia 0.255"	head height 0.031"	12 OZ	500	7.44
"	"	13/64"	0.110 DIA "	head dia 0.275"	head height 0.034"	1 LB	500	6.37
"	"	7/32"	0.119 DIA "	head dia 0.285"	head height 0.039"	1 1/4 LB	500	7.48
"	"	15/64"	0.129 DIA "	head dia 0.305"	head height 0.040"	1 1/2 LB	500	9.00
"	"	17/64"	0.143 DIA "	head dia 0.330"	head height 0.043"	2 LB	500	12.73
"	"	9/32"	0.147 DIA "	head dia 0.300"	head height 0.062"	2 1/2 LB	100	5.94
"	"	5/16"	0.159 DIA "	head dia 0.316"	head height 0.066"	3 LB	100	7.56
"	"	11/32"	0.175 DIA "	head dia 0.355"	head height 0.069"	4 LB	50	5.82
"	"	3/8"	0.186 DIA "	head dia 0.375"	head height 0.077"	5 LB	200	12.73
"	"	25/64"	0.202 DIA "	head dia 0.406"	head height 0.083"	6 LB	150	12.73
"	"	7/16"	0.223 DIA "	head dia 0.460"	head height 0.093"	8 LB	125	12.73
"	"	15/32"	0.237 DIA "	head dia 0.490"	head height 0.096"	10 LB	100	12.73
"	"	1/2"	0.257 DIA "	head dia 0.515"	head height 0.099"	12 LB	75	12.73

Solid Brass Finials

Finials Tap 8-32	knb-123	Brass Turning colonial	1/2 x 1/2	@	1.15
Finials Tap 8-32	knb-121	Brass Turning colonial	5/8 x 5/8	@	1.25
Finials Tap 8-32	knb-124	Brass Turning high top	1/2 x 7/16	@	1.15
Finials Tap 8-32	knb-125	Brass Turning high top	5/8 x 5/8	@	1.25
Finials Tap 8-32	knb-119	Brass Turning colonial	7/8 x 13/16	@	2.68



123

121

124

125

119

Using 1/4 inch square ruled paper

All prices are budgetary. An up-to-date quote is needed for every order.

Don't see what you need, Call Paul Barnhart 224-622-5958

Not responsible for carrier damages

Discounts available on greater quantities.

paul@barnhart-studios.com

Steel Rivets



		length	diameter	specs	count	price
rivet	Steel Round Head	3/16"	1/8" Dia.	Head: 0.235" Dia. x 0.100" Ht.	750	9.83
"	"	1/4"	"	"	700	8.76
"	"	5/16"	"	"	600	9.25
"	"	3/8"	"	"	500	9.37
"	"	1/2"	"	"	400	9.37
"	"	3/4"	"	"	300	9.37
"	Steel Flat Head	3/16"	"	Head: 0.260" Dia. x 0.048" Ht.	800	9.25
"	"	1/4"	"	"	700	9.40
"	"	5/16"	"	"	600	9.53
"	"	3/8"	"	"	550	9.37
"	"	1/2"	"	"	450	9.37
"	"	3/4"	"	"	300	9.37
"	Steel Round Head	1/4"	5/32" Dia.	Head: 0.290" Dia. x 0.124" Ht.	350	9.83
"	"	3/8"	"	"	300	9.83
"	"	1/2"	"	"	250	9.83
"	"	3/4"	"	"	200	9.83
"	"	1"	"	"	150	9.83
"	Steel Flat Head	1/4"	"	Head: 0.323" Dia. x 0.059" Ht.	400	9.25
"	"	3/8"	"	"	350	9.40
"	"	1/2"	"	"	250	9.37
"	"	3/4"	"	"	200	9.67
"	"	1"	"	"	150	9.83
"	Steel Round Head	1/4"	3/16" Dia.	Head: 0.348" Dia. x 0.147" Ht.	225	8.23
"	"	3/8"	"	"	200	8.35
"	"	1/2"	"	"	175	8.47
"	"	5/8"	"	"	150	8.50
"	"	3/4"	"	"	125	8.52
"	"	7/8"	"	"	100	8.57
"	"	1"	"	"	100	8.63
"	"	1 1/2"	"	"	75	8.68
"	"	2"	"	"	50	8.72
"	Steel Flat Head	1/4"	"	Head: 0.387" Dia. x 0.069" Ht.	250	8.11
"	"	3/8"	"	"	200	8.23
"	"	1/2"	"	"	175	8.35
"	"	5/8"	"	"	150	8.47
"	"	3/4"	"	"	125	8.50
"	"	7/8"	"	"	100	8.60
"	"	1"	"	"	100	8.78
"	"	1 1/2"	"	"	75	8.86
"	"	2"	"	"	50	9.00
"	Steel Round Head	3/8"	1/4" Dia.	Head: 0.460" Dia. x 0.196" Ht.	100	8.23
"	"	1/2"	"	"	75	8.35
"	"	3/4"	"	"	60	8.47
"	"	1"	"	"	50	8.52
"	"	1 1/4"	"	"	45	8.57
"	"	1 1/2"	"	"	40	8.65
"	"	2"	"	"	30	8.72
"	Steel Flat Head	3/8"	"	Head: 0.515" Dia. x 0.091" Ht.	100	8.23
"	"	1/2"	"	"	75	8.35
"	"	3/4"	"	"	60	8.47
"	"	1"	"	"	50	8.50
"	"	1 1/4"	"	"	45	8.60
"	"	1 1/2"	"	"	40	8.72
"	"	2"	"	"	30	8.86
"	Steel Round Head	5/8"	5/16" Dia.	Head: 0.572" Dia. x 0.243" Ht.	40	8.72
"	"	3/4"	"	"	35	8.23
"	"	1"	"	"	30	8.35
"	Steel Round Head	5/8"	"	Head: 0.641" Dia. x 0.113" Ht.	50	8.23
"	"	3/4"	"	"	40	8.35
"	"	1"	"	"	30	8.72
"	Steel Flat Head	1/2"	3/8" Dia.	Head: 0.684" Dia. x 0.291" Ht.	30	8.47
"	"	5/8"	"	"	25	8.47
"	"	3/4"	"	"	25	8.60
"	"	1"	"	"	20	8.72
"	Steel Round Head	1/2"	"	Head: 0.769" Dia. x 0.135" Ht.	35	8.23
"	"	5/8"	"	"	30	8.35
"	"	3/4"	"	"	25	8.47
"	"	1"	"	"	20	8.72

*All prices are budgetary. An up-to-date quote is needed for every order.
 Don't see what you need, Call Paul Barnhart 224-622-5958
 Not responsible for carrier damages
 Discounts available on greater quantities.*

paul@barnhart-studios.com

Annealed Steel Wire, Wire edges, handles, ties etc.

		thickness	weight	coating	length	price
wire	steel Black	.014"	1/4 lb. Spool	black oxide	478'	4.60
"	"	.014"	1 lb. Spool	"	1,913'	11.80
"	"	.014"	5 lb. Spool	"	9,565'	41.47
"	"	.014"	10 lb. Coil	"	19,130'	72.83
"	"	.016"	1/4 lb. Spool	"	357'	4.18
"	"	.016"	1 lb. Spool	"	1,429'	10.94
"	"	.016"	5 lb. Spool	"	7,145'	40.16
"	"	.016"	10 lb. Coil	"	14,290'	65.21
"	"	.018"	1/4 lb. Spool	"	286'	4.21
"	"	.018"	1 lb. Spool	"	1,144'	10.80
"	"	.018"	5 lb. Spool	"	5,720'	37.18
"	"	.018"	10 lb. Coil	"	11,440'	62.88
"	"	.023"	1/4 lb. Spool	"	177'	4.08
"	"	.023"	1 lb. Spool	"	709'	9.94
"	"	.023"	5 lb. Spool	"	3,545'	35.53
"	"	.023"	10 lb. Coil	"	7,090'	60.90
"	"	.029"	1/4 lb. Spool	"	114'	3.84
"	"	.029"	1 lb. Spool	"	458'	9.12
"	"	.029"	5 lb. Spool	"	2,290'	32.77
"	"	.029"	10 lb. Coil	"	4,580'	56.41
"	"	.035"	1/4 lb. Spool	"	77'	3.71
"	"	.035"	1 lb. Spool	"	310'	8.92
"	"	.035"	5 lb. Spool	"	1,550'	30.60
"	"	.035"	10 lb. Coil	"	3,100'	49.97
"	"	.041"	1/4 lb. Spool	"	55'	3.46
"	"	.041"	1 lb. Spool	"	223'	7.76
"	"	.041"	5 lb. Spool	"	1,115'	28.62
"	"	.041"	10 lb. Coil	"	2,230'	49.55
"	"	.048"	1/4 lb. Spool	"	41'	3.46
"	"	.048"	1 lb. Spool	"	166'	7.96
"	"	.048"	5 lb. Spool	"	830'	28.00
"	"	.048"	10 lb. Coil	"	1,660'	48.50
"	"	1/16"	1/4 lb. Spool	"	24'	3.18
"	"	1/16"	1 lb. Spool	"	96'	7.76
"	"	1/16"	5 lb. Spool	"	480'	27.48
"	"	1/16"	10 lb. Coil	"	960'	47.59
"	"	1/16"	100 lb. Coil	"	9,600'	252.88
"	"	.080"	1/4 lb. Spool	"	14'	2.68
"	"	.080"	1 lb. Spool	"	59'	7.49
"	"	.080"	5 lb. Spool	"	295'	27.49
"	"	.080"	10 lb. Coil	"	590'	46.16
"	"	.080"	100 lb. Coil	"	5,900'	252.88
"	"	.106"	100 lb. Coil	"	3,300'	248.00
"	"	.135"	100 lb. Coil	"	2,000'	262.67
"	"	.148"	100 lb. Coil	"	1700	258.77

Gauge	US Steel Inch	A.W.G. Inch
	Washbur n & Moen steel	Brown & Sharpe non-ferris
0	.307	.325
1	.283	.289
2	.263	.258
3	.244	.229
4	.225	.204
5	.207	.182
6	.192	.162
7	.177	.144
8	.162	.129
9	.148	.114
10	.135	.102
11	.121	.091
12	.106	.081
13	.092	.072
14	.080	.064
15	.072	.057
16	.063	.051
17	.054	.045
18	.048	.040
19	.041	.036
20	.035	.032
21	.032	.029
22	.029	.025
23	.026	.023
24	.023	.020
25	.020	.018
26	.018	.016
27	.017	.014
28	.016	.013
29	.015	.011
30	.014	.010



*All prices are budgetary. An up-to-date quote is needed for every order.
 Don't see what you need, Call Paul Barnhart 224-622-5958
 Not responsible for carrier damages
 Discounts available on greater quantities.
paul@barnhart-studios.com*

American Beauty Soldering Irons

Soldering Irons	Model	MSRP
20 Watt, 1/8" Pencil-Style Soldering Iron	3108-20	\$59.99
25 Watt, 1/8" Pencil-Style Soldering Iron	3108-25	\$59.99
30 Watt, 1/8" Pencil-Style Soldering Iron	3108-30	\$59.99
25 Watt, 3/16" Pencil-Style Soldering Iron	3110-25	\$65.99
30 Watt, 3/16" Pencil-Style Soldering Iron	3110-30	\$65.99
35 Watt, 3/16" Pencil-Style Soldering Iron	3110-35	\$65.99
40 Watt, 1/4" Pencil-Style Soldering Iron	3112-40	\$74.99
50 Watt, 1/4" Pencil-Style Soldering Iron	3112-50	\$74.99
60 Watt, 1/4" Pencil-Style Soldering Iron	3112-60	\$74.99
60 Watt, 1/4" Heavy-Duty Soldering Iron	3125-60	\$87.99
75 Watt, 1/4" Heavy-Duty Soldering Iron	3125-75	\$87.99
100 Watt, 3/8" Heavy-Duty Soldering Iron	3138-100	\$129.99
130 Watt, 3/8" Heavy-Duty Soldering Iron	3138-130	\$129.99
150 Watt, 3/8" Heavy-Duty Soldering Iron	3138-150	\$129.99
175 Watt, 3/8" Heavy-Duty Soldering Iron	3138X-175	\$139.99
200 Watt, 5/8" Heavy-Duty Soldering Iron	3158-200	\$179.99
250 Watt, 5/8" Heavy-Duty Soldering Iron	3158X-250	\$189.99
300 Watt, 7/8" Heavy-Duty Soldering Iron	3178-300	\$229.99
550 Watt, 1-1/8" Heavy-Duty Soldering Iron	3198-550	\$299.99

We can get replacement elements as well---

We recommend the following unit from American Beauty

Model:
V3700

MSRP:
\$139.99



American Beauty Soldering irons are full output irons designed and built to produce a tremendous amount of heat. Incorporating a voltage controller into your soldering process prolongs the life of your soldering irons' heating element and tip, reduces the thermal damage caused by excess heat buildup and saves energy and down-time by idling your iron at breaks. voltage controller is intended to use with our complete line of heavy-duty soldering irons, ranging from 60 to 550 Watts (Models 3125 to 3198). In addition, it can be used with our line of industrial solder pots (Models 300 & 600) to provide tighter control of temperature variation.

Solid-state voltage regulating device incorporated in each controller permits tighter process control, longer heating element life and a reduction in damage resulting from excess thermal capacity. Each is described separately below:

Longer heating element life: Remember the story about the tortoise and the hare? Enough said!

Tighter Process Control: Our internal tests have shown that by incorporating a voltage control with our Model 600 solder pot, we were able to achieve a temperature fluctuation of less than +/- 5°.

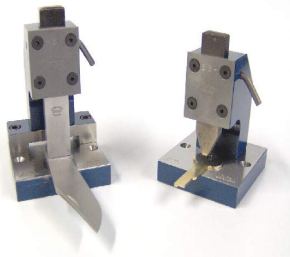
Improved Solder Joint Quality: The ideal operating temperature of your soldering iron or pot should be comfortably over the eutectic point of your solder. Excess heat simply causes damage.



The best warranty in the business

How do they know you made it ?

Make your Touchmark



Our engraving company has been in the steel stamp and die business for over 100 years, servicing the needs of industries whether it be; Wood workers, leather workers, Jewelry, tinsmiths, Blacksmiths, museums and craftsmen of various trades all over the world !

Our capabilities are vast and enable us to reproduce any design or lettering for steel stamps, dies, hubs, and molds, all of which can be manufactured from your artwork, blueprints, sketches, or samples.

Our engraving company produces the finest custom detailed steel stamps as per our customers specifications, with character heights as small as .008" high or .2mm ! The image is very sharp, resulting in the clearest impression possible, with even the most intricate details!

A customized stamp makes an everlasting impression as a gift for that special hobbyist in your family! If it is worth making, then it is worth marking!



Old fashioned detailed branding irons are available as a fire heated brand, an American Beauty Soldering Iron Brand.

Burn your logo into wood, leather, even plastic, and card stock.

Any style or size impression, just send us your artwork or drawing and size of area to be marked, we will do the rest! All leather stamps are machined with extra character depth, so your impression can be struck deeply and not have visible back round impresses. We can replicate signatures, logos and designs using your artwork or samples. Any type of MAKER name stamps or monograms produced on any size shank or hand held blanks, are not a problem. When replicating designs and logos, our patterns are hand engraved the old fashioned way to provide the customer with maximum detail and quality craftsmanship second to none! We also make stamps for branding applications such as leather or wood.

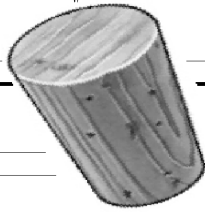
Need a medallion for a fund raiser, have your participants make their own. Develop your logo and medallion design and we will make the rest.

Draw your logo in a two inch circle with black marker. Use the line width in proportional to the circle diameter, email or send me a copy so we can provide you a quote.

*All prices are budgetary. An up-to-date quote is needed for every order.
 Don't see what you need, Call Paul Barnhart 224-622-5958
 Not responsible for carrier damages
 Discounts available on greater quantities.
paul@barnhart-studios.com*

Corks

cork	cork plugs	0000	3/16" large OD Dia	3/32" small OD Dia	1/2" Overall length	100	\$7.44
"	"	000	1/4" large OD Dia	5/32" small OD Dia	"	"	\$8.12
"	"	00	5/16" large OD Dia	7/32" small OD Dia	"	"	\$8.32
"	"	0	3/8" large OD Dia	9/32" small OD Dia	"	"	\$8.52
"	"	1	7/16" large OD Dia	21/64" small OD Dia	5/8" Overall length	"	\$9.66
"	"	2	1/2" large OD Dia	3/8" small OD Dia	11/16" Overall length	"	\$9.90
"	"	3	9/16" large OD Dia	27/64" small OD Dia	5/4" Overall length	"	\$11.42
"	"	4	5/8" large OD Dia	15/32" small OD Dia	13/16" Overall length	"	\$11.74
"	"	5	11/16" large OD Dia	17/32" small OD Dia	7/8" Overall length	"	\$12.73
"	"	6	3/4" large OD Dia	37/64" small OD Dia	15/16" Overall length	"	\$13.45
"	"	7	13/16" large OD Dia	5/8" small OD Dia	1" Overall length	"	\$15.62
"	"	8	7/8" large OD Dia	43/64" small OD Dia	1 1/16" Overall length	50	\$10.18
"	"	9	15/16" large OD Dia	47/64" small OD Dia	1 1/8" Overall length	"	\$13.04
"	"	10	1" large OD Dia	49/64" small OD Dia	1 1/4" Overall length	"	\$16.96
"	"	11	1 1/16" large OD Dia	53/64" small OD Dia	"	25	\$10.55
"	"	12	1 1/8" large OD Dia	57/64" small OD Dia	"	"	\$9.96
"	"	13	1 3/16" large OD Dia	61/64" small OD Dia	"	"	\$9.43
"	"	14	1 1/4" large OD Dia	1 1/64" small OD Dia	"	"	\$10.69
"	"	16	1 3/8" large OD Dia	1 3/32" small OD Dia	1 1/2" Overall length	"	\$16.16
"	"	18	1 1/2" large OD Dia	1 7/32" small OD Dia	"	10	\$7.78
"	"	20	1 5/8" large OD Dia	1 11/32" small OD Dia	"	"	\$7.69
"	"	22	1 3/4" large OD Dia	1 15/32" small OD Dia	"	"	\$8.86
"	"	24	1 7/8" large OD Dia	1 19/32" small OD Dia	"	"	\$9.48
"	"	26	2" large OD Dia	1 23/32" small OD Dia	"	"	\$11.81
"	"	28	2 1/8" large OD Dia	1 27/32" small OD Dia	"	"	\$15.37
"	"	30	2 1/4" large OD Dia	1 31/32" small OD Dia	"	"	\$14.20



Machining and Engineering

Modern Machine Shop Available	CNC Lathe, CNC Mill, EDM Wire, EDM Sinker, All types of tool steel	available	@/ hour	\$65.00
Design, 3D, Blueprint Product	Experienced Tooling design, product design, IGES, 3d, Solidworks		@/ hour	\$50.00
Hand Spun Products	Tin, Brass, Copper, and more		@/ hour	quote
Other manufacturing services	Die casting, Aluminum casting, Spinning, Brass casting, Painting Etc.		@/ hour	quote
Custom stamps and dies	Engraving		@/ hour	quote

Asphaltum

1 pint	Thin with turpentine or paint thinner			1 pint	\$8.50
1 quart	Thin with turpentine or paint thinner			1 quart	\$15.50

Liver of Sulpher

This is the patina chemical for Copper, use for brown/black colors mix with water	apply with brush, rag, spray	4 oz	\$5.50
---	------------------------------	------	--------

Ferric Chloride—liquid

Use this chemical diluted to etch tin so it looks old and gray	no shipping	1 pint	\$9.00
"	no shipping	1 gal	\$25.90

Ferric Chloride—powder

Use this chemical diluted to etch tin so it looks old	mix with 1 pint of water	OK to ship	1 lb	\$9.00
"	mix with 5 pints of water	OK to ship	5 lbs	\$28.50

Chinese pencils Really fine, small paint brushes

Use these for painting or for flux applications		@	\$2.50
---	--	---	--------

All prices are budgetary. An up-to-date quote is needed for every order.

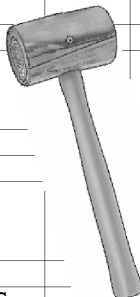
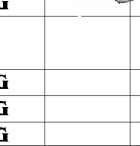
Don't see what you need, Call Paul Barnhart 224-622-5958

Not responsible for carrier damages

Discounts available on greater quantities.

paul@barnhart-studios.com

Mallet

MALLET	Rawhide	1/8 lbs	1" DIA	8" LONG		@	\$19.38
"	"	1/4 lbs	1 1/4" DIA	9 1/4" LONG		@	\$19.64
"	"	3/8 lbs	1 1/2" DIA	10" LONG		@	\$23.21
"	"	1/2 lbs	1 3/4" DIA	12" LONG		@	\$29.22
"	"	3/4 lbs	2" DIA	12" LONG		@	\$34.26
"	"	1 3/8 lbs	2 3/4" DIA	14" LONG		@	\$61.56
"	"	1 1/2 lbs	2 3/4" DIA	14" LONG		@	\$66.72
"	Weighted Rawhide	1/2 lbs	1 1/4" DIA	9 1/4" LONG		@	\$34.56
"	"	3/4 lbs	1 1/2" DIA	10" LONG		@	\$35.27
"	"	1 lbs	1 3/4" DIA	12" LONG		@	\$40.82
"	"	1 1/4 lbs	2" DIA	12" LONG		@	\$50.19
"	"	2 1/2 lbs	2 3/4" DIA	14" LONG		@	\$88.62
"	Wooden Mallet	9/16 lbs	2" DIA	12 3/4" LONG		@	\$14.72
"	"	3/4 lbs	2 1/4" DIA	13" LONG		@	\$14.88
"	"	1 lbs	2 1/2" DIA	13" LONG		@	\$17.06
"	"	1 1/8 lbs	2 3/4" DIA	13 1/4" LONG		@	\$20.84
"	"	1 5/16 lbs	3" DIA	13 3/8" LONG		@	\$22.47
"	"	1 3/4 lbs	3 1/2" DIA	14 3/4" LONG		@	\$24.96

Arch Punches

Punch	Arch Punch	3/16" Dia				@	\$16.08
"	"	1/4" Dia				@	\$16.08
"	"	5/16" Dia				@	\$16.08
"	"	3/8" Dia				@	\$17.09
"	"	7/16" Dia				@	\$17.09
"	"	1/2" Dia				@	\$19.01
"	"	9/16" Dia				@	\$21.44
"	"	5/8" Dia				@	\$21.44
"	"	11/16" Dia				@	\$22.41
"	"	3/4" Dia				@	\$23.30
"	"	13/16" Dia				@	\$26.73
"	"	7/8" Dia				@	\$26.73
"	"	15/16" Dia				@	\$29.21
"	"	1" Dia				@	\$29.21
"	"	1 1/16" Dia				@	\$38.58
"	"	1 1/8" Dia				@	\$39.08
"	"	1 3/16" Dia				@	\$43.26
"	"	1 1/4" Dia				@	\$43.26
"	"	1 5/16" Dia				@	\$48.30
"	"	1 3/8" Dia				@	\$50.67
"	"	1 7/16" Dia				@	\$64.91
"	"	1 1/2" Dia				@	\$64.91
"	"	1 5/8" Dia				@	\$78.66
"	"	1 3/4" Dia				@	\$89.81
"	"	1 7/8" Dia				@	\$104.67
"	"	2" Dia				@	\$110.46
"	"	2 1/8" Dia				@	\$126.74
"	"	2 1/4" Dia				@	\$143.81
"	"	2 3/8" Dia				@	\$151.88
"	"	2 1/2" Dia				@	\$152.75
"	"	2 5/8" Dia				@	\$156.59
"	"	2 3/4" Dia				@	\$161.63
"	"	2 7/8" Dia				@	\$171.53
"	"	3" Dia				@	\$175.68
"	"	3 1/8" Dia				@	\$182.01
"	"	3 1/4" Dia				@	\$182.34
"	"	3 3/8" Dia				@	\$185.99
"	"	3 1/2" Dia				@	\$197.27
"	"	3 5/8" Dia				@	\$213.39
"	"	3 3/4" Dia				@	\$213.24
"	"	3 7/8" Dia				@	\$240.59
"	"	4" Dia				@	\$240.59
Punch set	Arch Punch set	3/16", 5/16", 7/16", 9/16", 11/16", 13/16", 15/16", 1"				1 set	\$134.03
Punch set	Arch Punch set	1/4", 3/8", 1/2", 5/8", 3/4", 7/8", 1"				1 set	\$137.39
Punch set	Arch Punch set	1/4", 3/8", 1/2", 5/8", 3/4", 7/8", 1"				1 set	\$254.34

Tools for Space saving and start up operations.

M1045 - 3 In 1 Sheet Metal Machine 12"

This combination sheet metal machine brakes, shears and slip rolls mild steel sheet metal up to 12" wide and 22 gauge thick. It also includes section fingers for forming pans and boxes as well as various sized wire grooves for rolling wire. This machine does it all! * Maximum capacity in mild steel: 22 gauge * Roll diameter: 1-1/2" * Approximate shipping weight: 120 lbs.



Nearly discontinued... varies about \$ 250
Shipping via truck

M1042 - 3 In 1 Sheet Metal Machine 24"

With a 24" wide capacity and three sheet metal functions in one unit, there is no need to spend extra money and tie up shop space with three single-use machines. You'll love the convenience and accuracy of this do-it-all machine! * Maximum capacity in mild steel: 22 gauge * Roll diameter: 1-1/2" * Approximate shipping weight: 353 lbs.



Space saving does it all about \$ 430
Shipping via truck

Why Shopfox?



We have selected this brand for great price, warranty and for spare parts availability

Lets talk Candles

We have found Stearic Acid candles at a reasonable price and can offer 12 great candles for \$15.00. The Stearin Wax has been around before the civil war. Proctor and Gamble had a huge contract with the war dept. With a dry plaited wick, the wick goes to 1820. The candles were welcomed also cause they didn't "Sweat". Interesting note: that Spermaceti candles are Stearic acid wax but from the Whale's head, These candles are the same Chemical composition however from plant sources. You will find these candles will last about 1 inch an hour. Burn with a bright white-ish light and generally do not drip or smoke. Because the wax is of higher temperature, there is a very little puddle in the candle wick area, thus being a little safer with regards to spilled hot wax.

Our customers really like the candle, civil war period correct and last a long time. When they were available one candle was issued to the enlisted troops, both sides. The crush ribs were not period(on the bottom of the candle) and could be cut off easily. 7/8" in diameter and 7 1/2" tall.

\$15/ dozen or better price in greater quantity.
You get a bag of a dozen candles.



Great for Luminaries and Holiday Lighting.
Many of our customers supply these candles to their customers for use in tin lanterns and sconces.

All prices are budgetary. An up-to-date quote is needed for every order.

Don't see what you need, Call Paul Barnhart 224-622-5958

Not responsible for carrier damages

Discounts available on greater quantities.

paul@barnhart-studios.com

SOLID BRASS LAMP BURNERS AND RELATED

BURNER	NUTMEG	BURNER AND WICK	BRASS	@	\$13.20
WICK	"	3/8 X 8"	COTTON	@	\$0.48
COLLAR	"	MOUNTING COLLAR 5/8	BRASS	@	\$4.20
CHIMNEY	"	1 1/8 FITTER 3 1/2 TALL	GLASS	@	\$3.84
"	"	1 1/8 FITTER 4 1/2 TALL	"	@	\$4.08
"	"	1 1/8 FITTER 5 1/2 TALL	"	@	\$4.26
BURNER	GEM ARTIC	BURNER AND WICK	BRASS	@	\$13.20
WICK	"	1/2 x 8"	COTTON	@	\$0.54
COLLAR	"	MOUNTING COLLAR 5/8	BRASS	@	\$3.00
CHIMNEY	"	1 5/8 FITTER 5 TALL	GLASS	@	\$4.62
"	"	1 5/8 FITTER 6 1/2 TALL	"	@	\$5.22
BURNER	ACORN	BURNER AND WICK	BRASS	@	\$14.40
WICK	"	3/8 X 8"	COTTON	@	\$0.48
COLLAR	"	MOUNTING COLLAR 5/8	BRASS	@	\$5.10
CHIMNEY	"	1 1/8 FITTER 3 1/2 TALL	GLASS	@	\$3.84
"	"	1 1/8 FITTER 4 1/2 TALL	"	@	\$4.08
"	"	1 1/8 FITTER 5 1/2 TALL	"	@	\$4.26
BURNER	QUEEN ANNE SIZE #0	BURNER AND WICK	BRASS	@	\$12.60
WICK	"	1/2 x 8 "	COTTON	@	\$0.54
COLLAR	"	MOUNTING COLLAR 7/8	BRASS	@	\$3.00
CHIMNEY	"	2 FITTER 6 1/2 TALL	GLASS	@	\$6.66
BURNER	QUEEN ANNE SIZE #1	BURNER AND WICK	BRASS	@	\$14.40
WICK	"	5/8 X 8"	COTTON	@	\$0.54
COLLAR	"	MOUNTING COLLAR 7/8	BRASS	@	\$5.10
CHIMNEY	"	2 5/8 X 7.5	GLASS	@	\$5.70
BURNER	QUEEN ANNE SIZE #2	BURNER AND WICK	BRASS	@	\$14.04
WICK	"	7/8 X 8 "	COTTON	@	\$0.54
COLLAR	"	MOUNTING COLLAR 1 13/16	BRASS	@	\$5.10
CHIMNEY	"	3" FITTER 8 1/2 TALL	GLASS	@	\$6.00
"	"	3" FITTER 10 TALL	"	@	\$11.10
"	"	3" FITTER 12 TALL	"	@	\$12.30
FILLER CAP	1 "	SCREW ON W/CORK Male	BRASS	@	\$4.20
FILLER HOOP	1 "	THREADS TO ACCEPT CAP Above	BRASS	@	\$4.20
FILLER CAP	11/16"	SCREW ON FEMALE	BRASS	@	\$4.20
FILLER HOOP	11/16"	THREADS TO ACCEPT CAP Above	BRASS	@	\$4.20

RIVET SETTING TOOLS FOR SOLID RIVETS

rivet size					
3/32	"	Standard or oversize		@	\$28.50
1/8	"	Standard or oversize		@	\$28.50
5/32	"			@	\$28.50
3/16	"	Standard or oversize		@	\$29.50
7/32	"			@	\$29.50
1/4	"			@	\$29.50
9/32	"			@	\$33.25
	"			@	\$33.25

Introducing an old book just reprinted.
QUANTRILL'S 1847 TINMAN'S GUIDE

This is the first published technical guide on layout and pattern construction for tinsmiths – originally printed in 1847. Here is a reprint of the 'grand daddy' of all tinsmithing books.

With Bill McMillen's encouragement we have cleaned up the pages and republished the volume with the tables and graphics -- some are still hard to read and yet-- A treasure for any tinsmith worth his flux. If you enjoy Historical American Tinsmithing and have not had the opportunity to purchase an original 1847 edition-- this book is a great educational tool for you.

Thomas Quantrill was a mathematician and teacher. He published his construction geometry and provided pattern diagrams on various tinware products that were tedious to calculate in 1847. Now, this guide serves as historical reference where we can see the documented sizes of boilers, pans and pots etc.. Using the diagrams as a guide-- one can construct most any listed object in the correct historical manner and common sizes of the period.

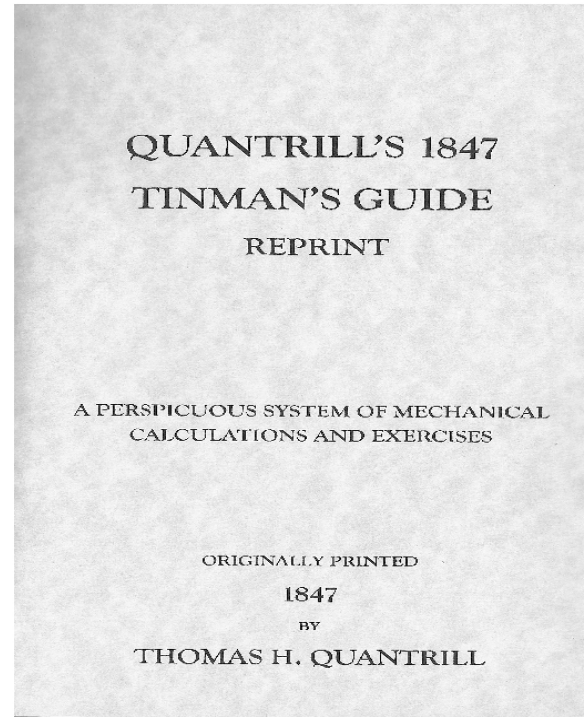
\$25.00

Softbound 74 pgs 8 1/2 x 5 1/2

Visit us at Barnhart-studios.com

Or call 224-622-5958 to get your copy.

Barnhart-studios.com provides a full line of tinsmithing and coppersmithing products including: solders, rivets, fluxes, and hot dipped tinplate.



We have a tool sale photo album, purchase a known condition tool from our selection. We know the condition of the tools and are upfront about any information we have. No Surprises ! Click on the link at the botom of the page.

List your surplus tool - you tell me how much you want for the tool and we try to get that amount. It costs nothing have your tool posted.

Prices vary please call



<http://picasaweb.google.com/paulcoppersmith1/BARNHARTSTUDIOTOOLSFORSALE?feat=directlink>

Liquid rosin users we have a solution for you, Rosin in a Jar – you add alcohol or alcohol containing product and make your own Liquid Rosin Flux. The rosin is hard and dissolves each time you re-fill the jar.

Contains no dyes or other harmful ingredients. Just Rosin. Try adding Glycerin to your mix to improve removal of the residue. Like the Purell shown.

\$6.00



All prices are budgetary. An up-to-date quote is needed for every order.
 Don't see what you need, Call Paul Barnhart 224-622-5958
 Not responsible for carrier damages
 Discounts available on greater quantities.
paul@barnhart-studios.com



Simply better.

Bessey Hand Tools---snips and shears

Listed below are the shears without micro serrations.
 We can get the serrated type if you so desire.

\$44.16 Left cut only
 non serrated
 Long cuts



Stock number	tool length	cut inches	mm	Pounds
D22AL-BE	11	2 1/2	1.2	1.25

Use up-side down for easy viewing of tight cuts.

\$19.99 Straight
 Left cutting
 Right cutting
 non serrated
 Light weight



D15S-BE

D15S-BE 7 1/5 13/16 18 0.44

D15AL-BE 7 1/5 13/16 18 0.44

D15A-BE 7 1/5 13/16 18 0.44



D15AL-BE



D15A-BE

Great for Student use

Great for tiny work

\$53.05 Right cutting
 Left cutting
 non serrated
 25% less effort



D29ASS-BE 10 1/4 13/16 1.2 1.25

D29ASSL-BE 10 1/4 13/16 1.2 1.25

\$51.99 1.2 mm cut width
 2" holes are easy
 3/8 starting hole
 Great for small square holes even less than 1/2 square



D24-SB 0.42 1

\$143.40 Great for stainless
 Left cutting
 Right cutting
 non serrated



D27AH-BE 10 1/4 13/16 1.2 1.25

D27AHL-BE 10 1/4 13/16 1.2 1.25

Click these links for video on why Bessey is the best tool for your investment

Bessey snips overview

http://www.youtube.com/watch?v=gLmKRiorrri&feature=player_embedded#

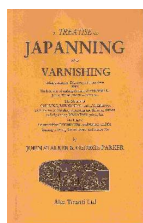
Bessey snips compact aviation snips overview

http://www.youtube.com/watch?v=O0Aj8xqE63M&feature=player_embedded#

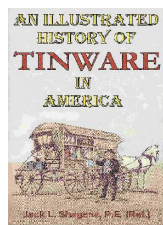
Bessey snips compound traditional snips overview

<http://www.youtube.com/watch?v=IGUSlqmSGjQ&feature=related>

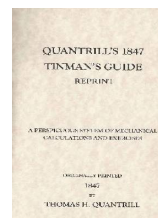
Books for the discovery and application of new techniques



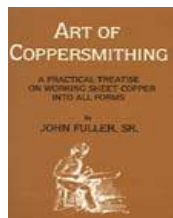
Reprint a treatise of Japanning and Varnishing published in 1688, by John Stalker and George Parker. Paper back 6 x 8 1/4, 1998 \$16.00 ISBN 0854586911



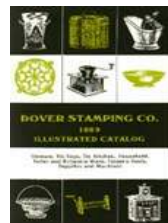
An Illustrated history of Tinware By Jack Shagena, 193 pages. Fully documented and illustrated. 8.75 x 6. Soft cover (2006) ISBN 0977686612



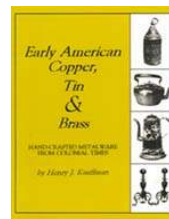
Reprint Quantrill's 1847 Tinman's Guide, by Thomas Quantrill, 74 pages. Text and Graphics. 5 x 8 1/2. Soft cover. \$25. (2010) ISBN 9780615375229 Published by Barnhart Studios



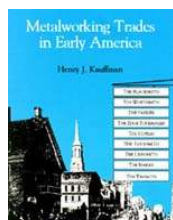
Art of Coppersmithing By John Fuller, Sr., 352 pages. 6 x 9-1/4. Soft cover. \$25.00. ISBN 1879335379



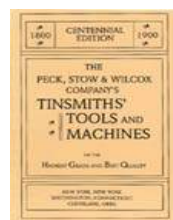
Dover Stamping Company 1869 Illustrated Catalog Tinware, Tin, Toys, Tin Kitchen, Household, Toilet and Britannia Ware, Tinner's Tools, Supplies & Machines. 214 pages. 6 x 9. Fully illustrated. Soft cover. \$16.95 (1994) ISBN 1879335573



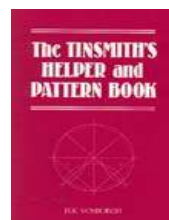
Early American Copper, Tin and Brass Handcrafted Metalware From Colonial Times By Henry J. Kauffman, 104 pages. 8-1/2 x 11. Fully illustrated. Soft cover. \$19.95. (1995) ISBN 187933562X



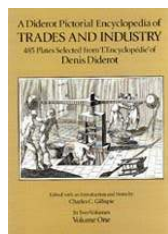
Metalworking Trades in Early America By Henry J. Kauffman, 168 pages. 8-1/2 x 11. 210 illustrations. Soft cover. \$22.95 (1995) ISBN 1879335581



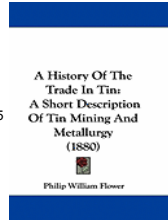
Wilcox Co.'s 1900 Centennial Catalog of Tinsmith's Tools and Machines. 144 pages. Approximately 300 illustrations. 6 x 9-1/4. Soft cover. \$14.95. (1993) ISBN 1879335387



Tinsmith's Helper and Pattern Book With Useful Rules, Diagrams and Tables By H. K. Vosburgh, 120 pages. 6 x 9. Soft cover. \$13.50. (1994) ISBN 1879335565



A Diderot Pictorial Encyclopedia of Trades and Industry in Two Volumes, 936 total pages. 9 x 12. Soft cover. 485 full page plates with over 2000 illustrations. \$59.90. (1993) Vol. 1 ISBN 0486274284; Vol. 2 ISBN 0486274292



A History of the Trade in Tin: a Short Description by Flower, Philip William reprint. ISBN-13: 9781437456745 ISBN: 143745674X



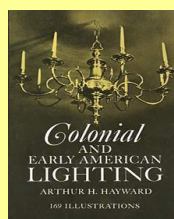
The Complete Metalsmith: An Illustrated Handbook, by Tim McCreight. 154 pages. 5 x 8. Illustrated throughout. Soft cover, spiral bound. \$14.95. (1991) ISBN 1929565062

paul@barnhart-studios.com

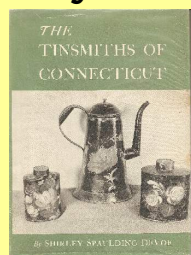
Out of Print Books – Availability Varies



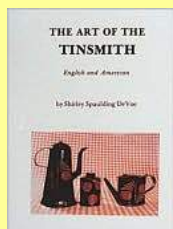
How to Paint and Decorate Furniture and Tinware by Zook, Jacob And Jane



Colonial & Early American Lighting, by Arthur H. Hayward. 229 Pages



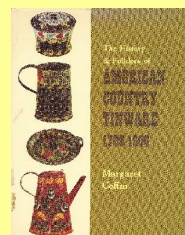
The Tinsmiths of Connecticut Shirley Spaulding DeVoe



Art of the Tinsmith, The: English and American. (ISBN: 0916838595 / 0-916838-59-5) DeVoe, Shirley Spaulding. Schiffer Pub Ltd, 1982. 222 pages. 11.75x9.25x1.00 inches.



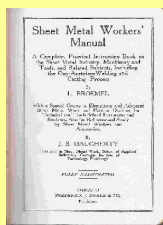
PONTPOOL AND USK JAPANNED WARES WITH THE EARLY HISTORY OF THE IRON AND TINPLATE INDUSTRIES AT PONTPOOL. John Simcox, Anne. The Ceramic Book Company, 1953.



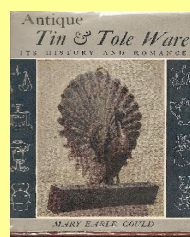
The History & Folklore of American Country Tinware, 1700-1900 by Margaret Coffin ISBN-13: 9780883651261 ISBN: 0883651262



TO CUT, PIECE, & SOLDER: THE WORK OF THE RURAL PENNSYLVANIA TINSMITH 1778-1908 (AN ORAL TRADITIONS PROJECT) (ISBN: 027100312X / 0-271-00312-X) Lasansky, Jeannette



Sheet Metal Workers' Manual by Broemel, L. And J. S. Daugherty, Drake, Chicago, 1918 or 1938 or 1942. (4.75 x 7.75 inches); 550 pages, index.



Gould, Mary Earle, Antique Tin and Tole Ware, Tuttle, Rutland VT, 1958.